



# Sheaves

---



**GUNNEBO**  
Industries

# Innovation with Passion, Peace of mind & Performance

*Gunnebo Industries live and breathe quality. For over 250 years we have developed and manufactured premium products of outstanding quality to industries within manufacturing, construction, oil & gas, offshore, fishing, and aquaculture worldwide.*

The harsh environments of these industries result in high demands on the equipment used, and the safety and reliability of our products are essentially what have positioned us as a premium producer over the years. At Gunnebo Industries our products are developed, manufactured and tested beyond the highest standards, and we take a long-term responsibility for our products and services. We are passionate about developing products for our customers' needs that are safe and reliable, today and in the future.

We believe the key to innovation is to truly understand the customers' needs and to continuously improve our products, services and processes. Every employee at Gunnebo Industries strives to provide excellent support and service, and we take great pride in what we do.

Our expertise, knowledge, commitment and long experience is something extraordinary; we are there every step of the way to help our customers be successful in their business.

We deliver quality and innovation with passion, peace of mind and performance – to every part of the world.

## About Us

The very first Gunnebo Industries product was manufactured in Småland, Sweden, all the way back in 1764.

•  
Since then we have developed groundbreaking innovations that have changed the industry of lifting equipment, and made it what it is today.

•  
Gunnebo Industries have production plants in Sweden, Norway, and USA.

•  
We have sales offices in 10 countries, and partners all over the world.

•  
We are a global brand known for innovation, outstanding quality, passion and strong performance.

## Extensive Product Range

### The GrabiQ System

Our GrabiQ Grade 100 range feature integrated shortening, reduced number of components and more flexible use of chain slings. This provides a modular concept for cost effective lifting solutions that covers a wide set of applications.

### Crane Blocks & Sheaves

An extensive product line, including swivels, snatch blocks, crane blocks, overhaul balls and sockets. Rigid controls on high quality make our products the standard of choice.

### Chain & Lifting Components

Our chain and components are made from special quenched and tempered alloy steel that guarantees high strength, low weight, high wear resistance and long life. All lifting components are uniformly marked with chain size, grade, manufacturer's designation and name. Every individual component and chain link is tested to the Manufacturing Proof Force before leaving our factories in Växjö and Gunnebo.

### Lifting Points

Our wide range of lifting points allow us to provide complete solutions developed for each customer's needs, enabling improved operational efficiency for our customers. All of our Lifting Points are CE marked. Each lifting point has been proof loaded to 2.5 times the Working Load Limit and visually inspected by a licensed inspector before leaving the factory.

### Shackles & Rigging Screws

Our shackles are made from a range of steel qualities, including acid proof stainless steel and high grade alloy steel to comply with the most stringent specifications. Parts of our shackle range are Type Approved to DNV 2.7-1. The production of shackles and rigging screws takes place in our factory located outside Bergen, Norway.

### Arctic Offshore

Adverse weather and rough sea conditions, sometimes in combination with extremely low temperatures, must be included in the design of offshore lifting sets. Our offshore range is produced from steel that gives improved impact strength at low operating temperatures, as well as reduced risk for hydrogen embrittlement.

# Standard Sheaves

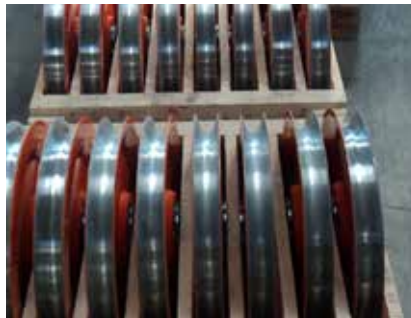
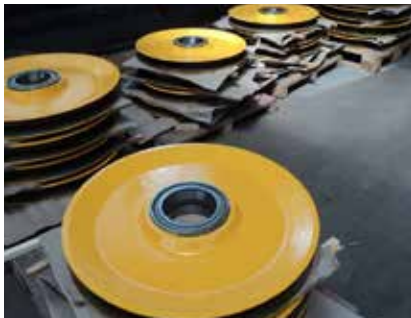
Our standard sheave series is designed according to DNV Standard for Certification No. 2.22 Lifting Appliances and Machinery Directive 2006/42/E.

The standard sheaves can be delivered with double row cylindrical roller bearings, or glide bearings depending on your needs.

The sheaves have an optimal weight/capacity ratio and can be used in lifting or handling. The sheaves come in sizes with OD from Ø200 to Ø3000 mm with SWL 1.5 to 140 Te.

Painting is according to NORSOK M-501 systems.

See our standard sheave product range on pages 5-10.



---

# Offshore Crane Sheaves

Gunnebo Industries has wide experience and competence in design and manufacturing of sheaves to offshore cranes in all sizes. The sheaves are delivered fully assembled with bearings with painting according to NORSOK M-501 systems.

Our offshore crane sheaves are designed to handle heavy loads and large fleet angles. Our competence and experience results in an optimized sheave fully suited for its intended use. If required, the groove for the steel wire rope can be hardened up to a hardness of 500 HB.

Our sheaves are made as one piece to avoid welds, either from ductile cast iron or machined from steel plate. Welded sheaves require extensive follow up by a third party.

Class feasibility:

- DNV GL
- ABS
- Lloyd's Register
- BV
- CCS

We manufacture our sheaves both in Europe and Asia and can currently produce sheaves up to 7.5 m in outer diameter with weights up to 20 tonnes.



# Launch and Recovery System (LARS) Sheaves

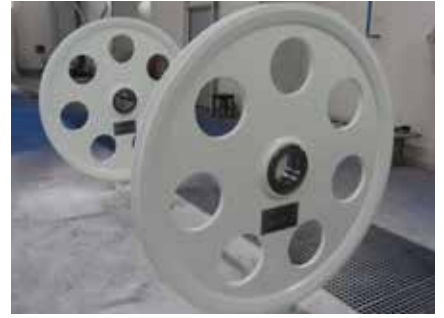
Our Launch and Recovery Sheaves have an optimized weight/capacity ratio and come in standard outer diameter size of Ø1580 mm, or they can be in a customized size according to customer requirements

The sheaves can be manufactured with a standard groove size and be temporary stored at our facilities upon agreement. When cable-sizes are known, final machining of the cable groove can be carried out for the actual cable diameter.

The sheaves are painted according to NORSOK M-501 systems.

Class feasibility:

- DNV GL
- ABS
- Lloyd's Register
- BV
- CCS



# Drilling and Riser Tensioning Sheaves

Our drilling and riser tensioning sheaves are available in the common sizes up to Ø1981 mm (78") in outer diameter. The sheaves are made from either ductile cast iron, forged or cast steel material, and fully optimized to its intended use. Gunnebo Industries has the possibility of producing high quantities of these sheaves due to multiple casting houses and large machine shop capabilities.

The sheaves are painted according to NORSOK M-501 systems.

Class feasibility:

- DNV GL
- API
- ABS



# Custom Made Sheaves

Gunnebo Industries can offer sheaves to land based industry such as overhead travelling cranes, mobile cranes, crawler cranes or other onshore systems.

All sheaves are designed and manufactured according to our customer's and applicable class requirements.

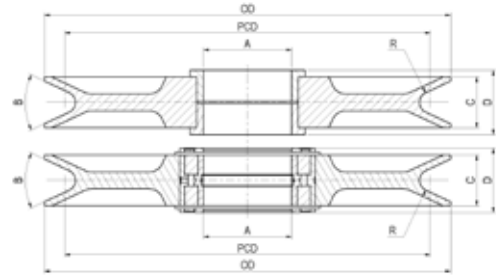
The sheaves are delivered fully assembled with bearings and painted according to NORSOK M-501 systems.



# Standard Sheaves with PCD 18× Steel Wire Rope Diameter

These sheaves have a universal design for use onshore, offshore and subsea in adverse service conditions.

Wire Diameter: 10 mm - 70 mm  
 SWL (Cable Tension): 1.5 - 140 metric tons  
 Wire Wrap: 180° contact around sheave.  
 Bearing: Glide bearing or double row cylindrical roller bearing.  
 Lubrication Method: Through shaft as standard with option for lubrication through sheave on request.  
 Surface Coating: NORSOK M-501 System No. 1 with topcoat colour RAL 1003 (Signal Yellow) with option for System No. 7 or other topcoat colour on request.  
 Hardening of Wire Groove: Induction hardening on request up to 450 Brinell Hardness.  
 Class: Manufacturer work certificate acc. to DNV GL, Lloyds, ABS, BV or CCS.  
 Regulations: European Machinery Directive.

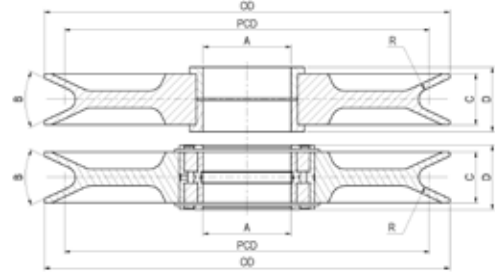


Product	SWL (metric tons)	Wire Rope Diameter (mm)	Roller Bearing	R (mm)	PCD (mm)	OD (mm)	A (mm)	B (°)	C (mm)	"D (mm)"		"Weight (kg)"	
										Roller Bearing	Glide Bearing	Roller Bearing	Glide Bearing
30-200-10001	1.5	10	5006-PP	5.3	180	200	30	50	24	34	34	3	4
30-200-10017	2	12	5008-PP	6.4	216	240	40	45	27	37	38	5	4
30-200-10018	3.75	14	5013-PP	7.4	252	280	65	50	34	50	46	8	7
30-200-10019	5	16	5015-PP	8.5	288	320	75	50	40	50	54	10	12
30-200-10020	6.25	18	5015-PP	9.5	324	360	75	50	40	50	54	13	14
30-200-10021	7.5	20	5016-PP	10.6	360	400	80	50	46	62	60	18	19
30-200-10022	9.5	22	5018-PP	11.7	396	440	90	50	51	61	67	23	24
30-200-10023	11	24	5020-PP	12.7	432	480	100	40	51	71	67	33	34
30-200-10024	12.5	26	5020-PP	13.8	468	520	100	40	51	71	67	34	36
30-200-10025	14.5	28	5026-PP	14.8	504	560	130	50	75	95	95	60	64
30-200-10026	17	30	5026-PP	15.9	540	600	130	50	75	95	95	70	74
30-200-10027	19.5	32	5028-PP	17	576	640	140	50	73	93	95	75	79
30-200-10028	21.5	34	5030-PP	18	612	680	150	40	77	97	100	92	96
30-200-10029	24.5	36	5030-PP	19.1	648	720	150	40	77	97	100	108	112
30-200-10116	28	38	5026-PP	20.2	684	760	130	30	75	95	95	104	95
30-200-10117	32	40	5028-PP	21.2	720	800	140	30	73	93	95	133	107
30-200-10118	36	42	5030-PP	22.3	756	840	150	30	77	97	100	152	156
30-200-10119	40	44	5030-PP	23.4	792	880	150	30	77	97	100	180	185
30-200-10120	45	46	5034-PP	24.4	828	920	170	40	97	117	122	185	188
30-200-10121	50	48	5034-PP	25.5	864	960	170	40	97	117	122	238	240
30-200-10122	54.5	50	5034-PP	26.5	900	1000	170	30	97	117	122	278	280
30-200-10123	60	52	5036-PP	27.6	936	1040	180	40	108	128	136	298	300
30-200-10124	65	54	5036-PP	28.7	972	1080	180	40	108	128	136	352	354
30-200-10125	71	56	5036-PP	29.7	1008	1120	180	30	116	128	136	373	373
30-200-10126	77.5	58	5040-PP	30.8	1044	1160	200	30	116	136	150	408	414
30-200-10128	89	60	5040-PP	31.8	1080	1200	200	30	126	136	150	483	489
30-200-10130	100	62	5044-PP	32.9	1116	1240	220	30	126	146	160	537	544
30-200-10154	110	64	5048-PP	34	1152	1280	240	30	150	146	160	585	593
30-200-10155	120	66	5060-PP	35	1188	1320	260	40	150	170	190	705	714
30-200-10156	130	68	5060-PP	36.1	1224	1360	260	40	150	170	190	714	724
30-200-10157	140	70	5060-PP	37.1	1260	1400	260	40	150	170	190	777	786

## Standard Sheaves with PCD 19x Steel Wire Rope Diameter

These sheaves have a universal design for use onshore, offshore and subsea in adverse service conditions.

Wire Diameter:	10 mm - 70 mm
SWL (Cable Tension):	1.5 - 140 metric tons
Wire Wrap:	180° contact around sheave.
Bearing:	Glide bearing or double row cylindrical roller bearing.
Lubrication Method:	Through shaft as standard with option for lubrication through sheave on request.
Surface Coating:	NORSOK M-501 System No. 1 with topcoat colour RAL 1003 (Signal Yellow) with option for System No. 7 or other topcoat colour on request.
Hardening of Wire Groove:	Induction hardening on request up to 450 Brinell Hardness.
Class:	Manufacturer work certificate acc. to DNV GL, Lloyds, ABS, BV or CCS.
Regulations:	European Machinery Directive.

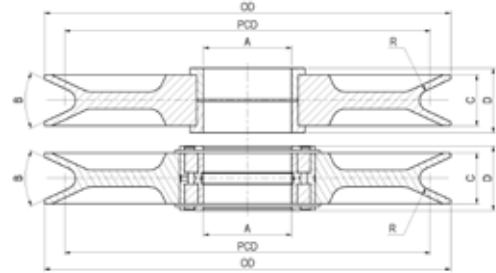


Product	SWL (metric tons)	Wire Rope Diameter (mm)	Roller Bearing	R (mm)	PCD (mm)	OD (mm)	A (mm)	B (°)	C (mm)	"D (mm)"		"Weight (kg)"	
										Roller Bearing	Glide Bearing	Roller Bearing	Glide Bearing
30-200-10258	1.5	10	5006-PP	5.3	190	210	30	50	24	34	34	4	4
30-200-10259	2	12	5008-PP	6.4	228	252	40	45	27	37	38	5	5
30-200-10260	3.75	14	5013-PP	7.4	266	294	65	50	34	50	46	8	9
30-200-10261	5	16	5015-PP	8.5	304	336	75	50	40	50	54	10	13
30-200-10262	6.25	18	5015-PP	9.5	342	378	75	50	40	50	54	13	14
30-200-10263	7.5	20	5016-PP	10.6	380	420	80	50	46	62	60	18	19
30-200-10264	9.5	22	5018-PP	11.7	418	462	90	50	51	61	67	23	24
30-200-10265	11	24	5020-PP	12.7	456	504	100	40	51	71	67	32	33
30-200-10266	12.5	26	5020-PP	13.8	494	546	100	40	51	71	67	35	37
30-200-10267	14.5	28	5026-PP	14.8	532	588	130	50	75	95	95	57	60
30-200-10268	17	30	5026-PP	15.9	570	630	130	50	75	95	95	62	64
30-200-10269	19.5	32	5028-PP	17	608	672	140	50	73	93	95	72	75
30-200-10270	21.5	34	5030-PP	18	646	714	150	40	77	97	100	87	88
30-200-10271	24.5	36	5030-PP	19.1	684	756	150	40	77	97	100	102	104
30-200-10272	28	38	5026-PP	20.2	722	798	130	30	75	95	95	114	117
30-200-10273	32	40	5028-PP	21.2	760	840	140	30	73	93	95	130	134
30-200-10274	36	42	5030-PP	22.3	798	882	150	30	77	97	100	164	167
30-200-10275	40	44	5030-PP	23.4	836	924	150	30	77	97	100	179	183
30-200-10276	45	46	5034-PP	24.4	874	966	170	40	97	117	122	202	202
30-200-10277	50	48	5034-PP	25.5	912	1008	170	40	97	117	122	224	228
30-200-10278	54.5	50	5034-PP	26.5	950	1050	170	30	97	117	122	267	272
30-200-10279	60	52	5036-PP	27.6	988	1092	180	40	108	128	136	292	297
30-200-10280	65	54	5036-PP	28.7	1026	1134	180	40	108	128	136	315	320
30-200-10281	71	56	5036-PP	29.7	1064	1176	180	30	116	128	136	380	385
30-200-10282	77.5	58	5040-PP	30.8	1102	1218	200	30	116	136	150	440	449
30-200-10283	89	60	5040-PP	31.8	1140	1260	200	30	126	136	150	518	526
30-200-10284	100	62	5044-PP	32.9	1178	1302	220	30	126	146	160	605	614
30-200-10285	110	64	5048-PP	34	1216	1344	240	30	150	146	160	693	702
30-200-10286	120	66	5060-PP	35	1254	1386	260	40	150	170	190	672	683
30-200-10287	130	68	5060-PP	36.1	1292	1428	260	40	150	170	190	754	765
30-200-10288	140	70	5060-PP	37.1	1330	1470	260	40	150	170	190	868	879

# Standard Sheaves with PCD 20x Steel Wire Rope Diameter

These sheaves have a universal design for use onshore, offshore and subsea in adverse service conditions. This size is also suited for systems with heave compensation

- Wire Diameter: 10 mm - 70 mm
- SWL (Cable Tension): 1.5 - 140 metric tons
- Wire Wrap: 180° contact around sheave.
- Bearing: Glide bearing or double row cylindrical roller bearing.
- Lubrication Method: Through shaft as standard with option for lubrication through sheave on request.
- Surface Coating: NORSOK M-501 System No. 1 with topcoat colour RAL 1003 (Signal Yellow) with option for System No. 7 or other topcoat colour on request.
- Hardening of Wire Groove: Induction hardening on request up to 450 Brinell Hardness.
- Class: Manufacturer work certificate acc. to DNV GL, Lloyds, ABS, BV or CCS.
- Regulations: European Machinery Directive.



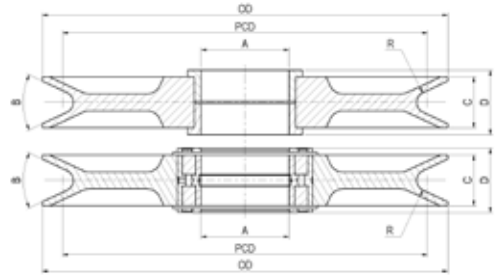
Product	SWL (metric tons)	Wire Rope Diameter (mm)	Roller Bearing	R (mm)	PCD (mm)	OD (mm)	A (mm)	B (°)	C (mm)	"D (mm)"		"Weight (kg)"	
										Roller Bearing	Glide Bearing	Roller Bearing	Glide Bearing
30-200-10196	1.5	10	5006-PP	5.3	200	220	30	50	24	34	34	4	4
30-200-10197	2	12	5008-PP	6.4	240	264	40	45	27	37	38	5	7
30-200-10198	3.75	14	5013-PP	7.4	280	308	65	50	34	50	46	8	9
30-200-10199	5	16	5015-PP	8.5	320	352	75	50	40	50	54	12	13
30-200-10200	6.25	18	5015-PP	9.5	360	396	75	50	40	50	54	14	15
30-200-10201	7.5	20	5016-PP	10.6	400	440	80	50	46	62	60	20	22
30-200-10202	9.5	22	5018-PP	11.7	440	484	90	50	51	61	67	25	27
30-200-10203	11	24	5020-PP	12.7	480	528	100	40	51	71	67	33	34
30-200-10204	12.5	26	5020-PP	13.8	520	572	100	40	51	71	67	42	44
30-200-10205	14.5	28	5026-PP	14.8	560	616	130	50	75	95	95	67	70
30-200-10206	17	30	5026-PP	15.9	600	660	130	50	75	95	95	80	83
30-200-10207	19.5	32	5028-PP	17	640	704	140	50	73	93	95	84	87
30-200-10187	21.5	34	5030-PP	18	680	748	150	40	77	97	100	102	104
30-200-10208	24.5	36	5030-PP	19.1	720	792	150	40	77	97	100	122	125
30-200-10209	28	38	5026-PP	20.2	760	836	130	30	75	95	95	143	145
30-200-10210	32	40	5028-PP	21.2	800	880	140	30	73	93	95	157	160
30-200-10211	36	42	5030-PP	22.3	840	924	150	30	77	97	100	185	189
30-200-10212	40	44	5030-PP	23.4	880	968	150	30	77	97	100	203	207
30-200-10213	45	46	5034-PP	24.4	920	1012	170	40	97	117	122	238	242
30-200-10214	50	48	5034-PP	25.5	960	1056	170	40	97	117	122	265	269
30-200-10215	54.5	50	5034-PP	26.5	1000	1100	170	30	97	117	122	312	317
30-200-10216	60	52	5036-PP	27.6	1040	1144	180	40	108	128	136	334	339
30-200-10217	65	54	5036-PP	28.7	1080	1188	180	40	108	128	136	377	382
30-200-10218	71	56	5036-PP	29.7	1120	1232	180	30	116	128	136	430	435
30-200-10219	77.5	58	5040-PP	30.8	1160	1276	200	30	116	136	150	507	514
30-200-10220	89	60	5040-PP	31.8	1200	1320	200	30	126	136	150	574	582
30-200-10221	100	62	5044-PP	32.9	1240	1364	220	30	126	146	160	627	636
30-200-10222	110	64	5048-PP	34	1280	1408	240	30	150	146	160	665	674
30-200-10223	120	66	5060-PP	35	1320	1452	260	40	150	170	190	768	779
30-200-10224	130	68	5060-PP	36.1	1360	1496	260	40	150	170	190	820	831
30-200-10225	140	70	5060-PP	37.1	1400	1540	260	40	150	170	190	902	912



## Standard Sheaves with PCD 22× Steel Wire Rope Diameter

These sheaves have a universal design for use onshore, offshore and subsea in adverse service conditions. This size is also suited for systems with heave compensation.

Wire Diameter:	10 mm - 70 mm
SWL (Cable Tension):	1.5 - 140 metric tons
Wire Wrap:	180° contact around sheave.
Bearing:	Glide bearing or double row cylindrical roller bearing.
Lubrication Method:	Through shaft as standard with option for lubrication through sheave on request.
Surface Coating:	NORSOK M-501 System No. 1 with topcoat colour RAL 1003 (Signal Yellow) with option for System No. 7 or other topcoat colour on request.
Hardening of Wire Groove:	Induction hardening on request up to 450 Brinell Hardness.
Class:	Manufacturer work certificate acc. to DNV GL, Lloyds, ABS, BV or CCS.
Regulations:	European Machinery Directive.

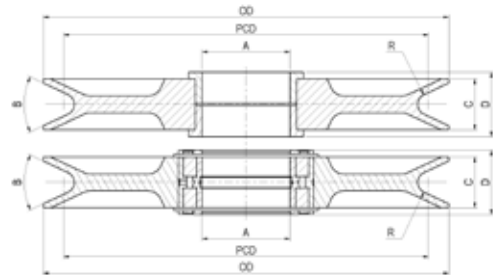


Product	SWL (metric tons)	Wire Rope Diameter (mm)	Roller Bearing	R (mm)	PCD (mm)	OD (mm)	A (mm)	B (°)	C (mm)	"D (mm)"		"Weight (kg)"	
										Roller Bearing	Glide Bearing	Roller Bearing	Glide Bearing
30-200-10226	1.5	10	5006-PP	5.3	220	240	30	50	24	34	34	4	4
30-200-10227	2	12	5008-PP	6.4	264	288	40	45	27	37	38	5	5
30-200-10228	3.75	14	5013-PP	7.4	308	336	65	50	34	50	46	11	11
30-200-10229	5	16	5015-PP	8.5	352	384	75	50	40	50	54	13	2
30-200-10230	6.25	18	5015-PP	9.5	396	432	75	50	40	50	54	17	17
30-200-10231	7.5	20	5016-PP	10.6	440	480	80	50	46	62	60	22	23
30-200-10232	9.5	22	5018-PP	11.7	484	528	90	50	51	61	67	29	30
30-200-10233	11	24	5020-PP	12.7	528	576	100	40	51	71	67	36	37
30-200-10234	12.5	26	5020-PP	13.8	572	624	100	40	51	71	67	43	44
30-200-10235	14.5	28	5026-PP	14.8	616	672	130	50	75	95	95	64	67
30-200-10236	17	30	5026-PP	15.9	660	720	130	50	75	95	95	79	81
30-200-10237	19.5	32	5028-PP	17	704	768	140	50	73	93	95	86	88
30-200-10238	21.5	34	5030-PP	18	748	816	150	40	77	97	100	104	105
30-200-10239	24.5	36	5030-PP	19.1	792	864	150	40	77	97	100	121	122
30-200-10240	28	38	5026-PP	20.2	836	912	130	30	75	95	95	139	142
30-200-10241	32	40	5028-PP	21.2	880	960	140	30	73	93	95	160	164
30-200-10242	36	42	5030-PP	22.3	924	1008	150	30	77	97	100	190	194
30-200-10243	40	44	5030-PP	23.4	968	1056	150	30	77	97	100	231	235
30-200-10244	45	46	5034-PP	24.4	1012	1104	170	40	97	117	122	264	268
30-200-10245	50	48	5034-PP	25.5	1056	1152	170	40	97	117	122	293	297
30-200-10246	54.5	50	5034-PP	26.5	1100	1200	170	30	97	117	122	365	369
30-200-10247	60	52	5036-PP	27.6	1144	1248	180	40	108	128	136	400	405
30-200-10248	65	54	5036-PP	28.7	1188	1296	180	40	108	128	136	431	437
30-200-10249	71	56	5036-PP	29.7	1232	1344	180	30	116	128	136	554	560
30-200-10250	77.5	58	5040-PP	30.8	1276	1392	200	30	116	136	150	598	606
30-200-10251	89	60	5040-PP	31.8	1320	1440	200	30	126	136	150	692	701
30-200-10252	100	62	5044-PP	32.9	1364	1488	220	30	126	146	160	717	726
30-200-10253	110	64	5048-PP	34	1408	1536	240	30	150	146	160	827	836
30-200-10254	120	66	5060-PP	35	1452	1584	260	40	150	170	190	910	921
30-200-10255	130	68	5060-PP	36.1	1496	1632	260	40	150	170	190	973	984
30-200-10256	140	70	5060-PP	37.1	1540	1680	260	40	150	170	190	1056	1069

## Standard Sheaves with PCD 24× Steel Wire Rope Diameter

These sheaves have a universal design for use onshore, offshore and subsea in adverse service conditions. This size is also suited for systems with heave compensation.

Wire Diameter:	10 mm - 70 mm
SWL (Cable Tension):	1.5 - 140 metric tons
Wire Wrap:	180° contact around sheave.
Bearing:	Glide bearing or double row cylindrical roller bearing.
Lubrication Method:	Through shaft as standard with option for lubrication through sheave on request.
Surface Coating:	NORSOK M-501 System No. 1 with topcoat colour RAL 1003 (Signal Yellow) with option for System No. 7 or other topcoat colour on request.
Hardening of Wire Groove:	Induction hardening on request up to 450 Brinell Hardness.
Class:	Manufacturer work certificate acc. to DNV GL, Lloyds, ABS, BV or CCS.
Regulations:	European Machinery Directive.

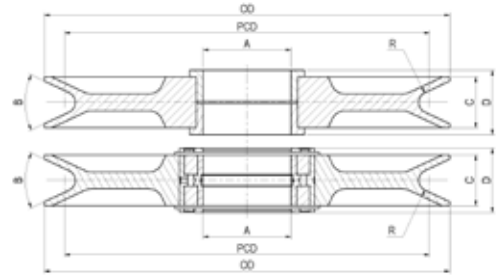


Product	SWL (metric tons)	Wire Rope Diameter (mm)	Roller Bearing	R (mm)	PCD (mm)	OD (mm)	A (mm)	B (°)	C (mm)	"D (mm)"		"Weight (kg)"	
										Roller Bearing	Glide Bearing	Roller Bearing	Glide Bearing
30-200-10440	1.5	10	5006-PP	5.3	240	260	30	50	24	34	34	5	5
30-200-10441	2	12	5008-PP	6.4	288	312	40	45	27	37	38	8	8
30-200-10442	3.75	14	5013-PP	7.4	336	364	65	50	34	50	46	12	13
30-200-10443	5	16	5015-PP	8.5	384	416	75	50	40	50	54	18	19
30-200-10444	6.25	18	5015-PP	9.5	432	468	75	50	40	50	54	24	25
30-200-10445	7.5	20	5016-PP	10.6	480	520	80	50	46	62	60	33	33
30-200-10446	9.5	22	5018-PP	11.7	528	572	90	50	51	61	67	43	43
30-200-10447	11	24	5020-PP	12.7	576	624	100	40	51	71	67	58	59
30-200-10448	12.5	26	5020-PP	13.8	624	676	100	40	51	71	67	67	69
30-200-10449	14.5	28	5026-PP	14.8	672	728	130	50	75	95	95	102	104
30-200-10450	17	30	5026-PP	15.9	720	780	130	50	75	95	95	113	115
30-200-10451	19.5	32	5028-PP	17	768	832	140	50	73	93	95	127	130
30-200-10452	21.5	34	5030-PP	18	816	884	150	40	77	97	100	155	159
30-200-10453	24.5	36	5030-PP	19.1	864	936	150	40	77	97	100	177	180
30-200-10454	28	38	5026-PP	20.2	912	988	130	30	75	95	95	205	208
30-200-10455	32	40	5028-PP	21.2	960	1040	140	30	73	93	95	234	237
30-200-10456	36	42	5030-PP	22.3	1008	1092	150	30	77	97	100	274	278
30-200-10457	40	44	5030-PP	23.4	1056	1144	150	30	77	97	100	312	315
30-200-10458	45	46	5034-PP	24.4	1104	1196	170	40	97	117	122	369	374
30-200-10459	50	48	5034-PP	25.5	1152	1248	170	40	97	117	122	415	419
30-200-10460	54.5	50	5034-PP	26.5	1200	1300	170	30	97	117	122	460	464
30-200-10461	60	52	5036-PP	27.6	1248	1352	180	40	108	128	136	523	490
30-200-10462	65	54	5036-PP	28.7	1296	1404	180	40	108	128	136	582	587
30-200-10463	71	56	5036-PP	29.7	1344	1456	180	30	116	128	136	650	655
30-200-10464	77.5	58	5040-PP	30.8	1392	1508	200	30	116	136	150	720	729
30-200-10465	89	60	5040-PP	31.8	1440	1560	200	30	126	136	150	805	813
30-200-10466	100	62	5044-PP	32.9	1488	1612	220	30	126	146	160	903	912
30-200-10467	110	64	5048-PP	34	1536	1664	240	30	150	146	160	969	979
30-200-10468	120	66	5060-PP	35	1584	1716	260	40	150	170	190	1195	1205
30-200-10469	130	68	5060-PP	36.1	1632	1768	260	40	150	170	190	1213	1223
30-200-10470	140	70	5060-PP	37.1	1680	1820	260	40	150	170	190	1312	1323

## Standard Sheaves with PCD 25x Steel Wire Rope Diameter

These sheaves have a universal design for use onshore, offshore and subsea in adverse service conditions. This size is also suited for systems with heave compensation.

Wire Diameter:	10 mm - 70 mm
SWL (Cable Tension):	1.5 - 140 metric tons
Wire Wrap:	180° contact around sheave.
Bearing:	Glide bearing or double row cylindrical roller bearing.
Lubrication Method:	Through shaft as standard with option for lubrication through sheave on request.
Surface Coating:	NORSOK M-501 System No. 1 with topcoat colour RAL 1003 (Signal Yellow) with option for System No. 7 or other topcoat colour on request.
Hardening of Wire Groove:	Induction hardening on request up to 450 Brinell Hardness.
Class:	Manufacturer work certificate acc. to DNV GL, Lloyds, ABS, BV or CCS.
Regulations:	European Machinery Directive.



Product	SWL (metric tons)	Wire Rope Diameter (mm)	Roller Bearing	R (mm)	PCD (mm)	OD (mm)	A (mm)	B (°)	C (mm)	"D (mm)"		"Weight (kg)"	
										Roller Bearing	Glide Bearing	Roller Bearing	Glide Bearing
30-200-10370	1.5	10	5006-PP	5.3	250	270	30	50	24	34	34	7	7
30-200-10371	2	12	5008-PP	6.4	300	324	40	45	27	37	38	10	5
30-200-10372	3.75	14	5013-PP	7.4	350	378	65	50	34	50	46	15	15
30-200-10373	5	16	5015-PP	8.5	400	432	75	50	40	50	54	20	22
30-200-10374	6.25	18	5015-PP	9.5	450	486	75	50	40	50	54	29	30
30-200-10375	7.5	20	5016-PP	10.6	500	540	80	50	46	62	60	40	42
30-200-10376	9.5	22	5018-PP	11.7	550	594	90	50	51	61	67	55	55
30-200-10377	11	24	5020-PP	12.7	600	648	100	40	51	71	67	68	69
30-200-10378	12.5	26	5020-PP	13.8	650	702	100	40	51	71	67	86	88
30-200-10379	14.5	28	5026-PP	14.8	700	756	130	50	75	95	95	123	125
30-200-10380	17	30	5026-PP	15.9	750	810	130	50	75	95	95	144	148
30-200-10381	19.5	32	5028-PP	17	800	864	140	50	73	93	95	154	158
30-200-10382	21.5	34	5030-PP	18	850	918	150	40	77	97	100	180	184
30-200-10383	24.5	36	5030-PP	19.1	900	972	150	40	77	97	100	210	214
30-200-10384	28	38	5026-PP	20.2	950	1026	130	30	75	95	95	243	245
30-200-10385	32	40	5028-PP	21.2	1000	1080	140	30	73	93	95	279	283
30-200-10386	36	42	5030-PP	22.3	1050	1134	150	30	77	97	100	325	329
30-200-10387	40	44	5030-PP	23.4	1100	1188	150	30	77	97	100	374	377
30-200-10388	45	46	5034-PP	24.4	1150	1242	170	40	97	117	122	430	434
30-200-10389	50	48	5034-PP	25.5	1200	1296	170	40	97	117	122	485	490
30-200-10390	54.5	50	5034-PP	26.5	1250	1350	170	30	97	117	122	541	545
30-200-10391	60	52	5036-PP	27.6	1300	1404	180	40	108	128	136	614	619
30-200-10392	65	54	5036-PP	28.7	1350	1458	180	40	108	128	136	680	685
30-200-10393	71	56	5036-PP	29.7	1400	1512	180	30	116	128	136	752	757
30-200-10394	77.5	58	5040-PP	30.8	1450	1566	200	30	116	136	150	835	844
30-200-10395	89	60	5040-PP	31.8	1500	1620	200	30	126	136	150	934	943
30-200-10396	100	62	5044-PP	32.9	1550	1674	220	30	126	146	160	1028	1037
30-200-10397	110	64	5048-PP	34	1600	1728	240	30	150	146	160	1118	1128
30-200-10398	120	66	5060-PP	35	1650	1782	260	40	150	170	190	1298	1309
30-200-10399	130	68	5060-PP	36.1	1700	1836	260	40	150	170	190	1407	1418
30-200-10400	140	70	5060-PP	37.1	1750	1890	260	40	150	170	190	1523	1534

# Contact Information

---

## Gunnebo Industrier AB

Tel: +46 21 83 82 00

E-mail: [export@gunneboindustries.com](mailto:export@gunneboindustries.com)

Website: [www.gunneboindustries.com](http://www.gunneboindustries.com)



## Sales Offices

### Gunnebo Industries Pty Ltd, AUSTRALIA

Tel: +61 7 3451 0900

E-mail: [general.info@gunneboindustries.com.au](mailto:general.info@gunneboindustries.com.au)

### Gunnebo Industries Sp. z o.o, POLAND

Tel: +48 55 24 22 010

E-mail: [zawiesia@gunneboindustries.pl](mailto:zawiesia@gunneboindustries.pl)

### Gunnebo Industries Co. LTD, P.R of CHINA

Tel: +86 512 5525 2200

E-mail: [info@gunnebolifting.cn](mailto:info@gunnebolifting.cn)

### Gunnebo Industries (Pty) Ltd, SOUTH AFRICA

Tel: +27 11 614 6078

E-mail: [info@gunnebolifting.co.za](mailto:info@gunnebolifting.co.za)

### Gunnebo Industries GmbH, GERMANY

Tel: +49 273 989 720

E-mail : [info@gunneboindustries.de](mailto:info@gunneboindustries.de)

### Gunnebo Industries Ltda, SOUTH AMERICA

Tel: +55 11 4055 9800

E-mail: [vendas@gunneboindustries.com.br](mailto:vendas@gunneboindustries.com.br)

### Gunnebo Industries Corp, NORTH AMERICA

Tel: +1 918 832 8933

E-mail: [sales@gjcorp.com](mailto:sales@gjcorp.com)

### Gunnebo Industrier AB, SWEDEN

Tel: +46 31 764 37 00

E-mail: [gbg@gunneboindustries.com](mailto:gbg@gunneboindustries.com)

### Gunnebo Anja Industrier AS, NORWAY

Tel: +47 561 933 00

E-Mail: [sales@gunneboindustrier.no](mailto:sales@gunneboindustrier.no)

### Gunnebo Industries Ltd, UNITED KINGDOM

Tel: +44 152 752 2560

E-mail: [sales@gunneboindustries.co.uk](mailto:sales@gunneboindustries.co.uk)